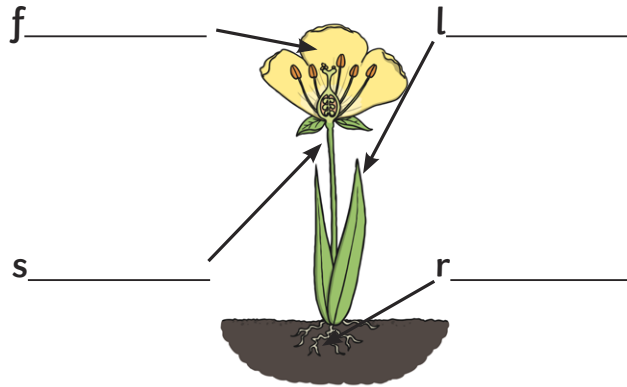


Year 1 Plants

Label the parts of a plant.



Draw a line from the part of the plant to the job it does.

leaf

Carries water to different parts of the plant and holds the plant upright.

root

Collects sunlight.

stem

Keeps the plant in the ground and gets water from the soil.

Choose a word from the box to fill in the gaps in the sentences.

evergreens

deciduous

autumn

Some trees lose their leaves in the _____. These trees are called _____.

Some trees keep their leaves all year. They are called _____.